

A woman with dark hair tied back, wearing a white shirt with thin black vertical stripes, is leaning over a wooden desk. She is holding a black pen in her right hand and gesturing with her left hand as if explaining something. In the foreground, the back of a man's head is visible, showing he is listening. On the desk, there are two silver laptops and a pair of glasses. The background is a bright office space with a window and some greenery.

**GRI** COMMUNITY

**Become a Leading  
Force in Sustainability  
Reporting:**

**Join the GRI  
Community**

# As a GRI Community member, you can develop your skills, extend your network, and show potential clients you are a trusted source of sustainability reporting expertise.

## Showcase your expertise

Highlight your sustainability reporting experience and commitment, through marketing opportunities with the GRI Community Mark.

## Increase your knowledge and skills

Develop your reporting knowledge via peer-to-peer learning, benchmarking, and access to certified professional development.

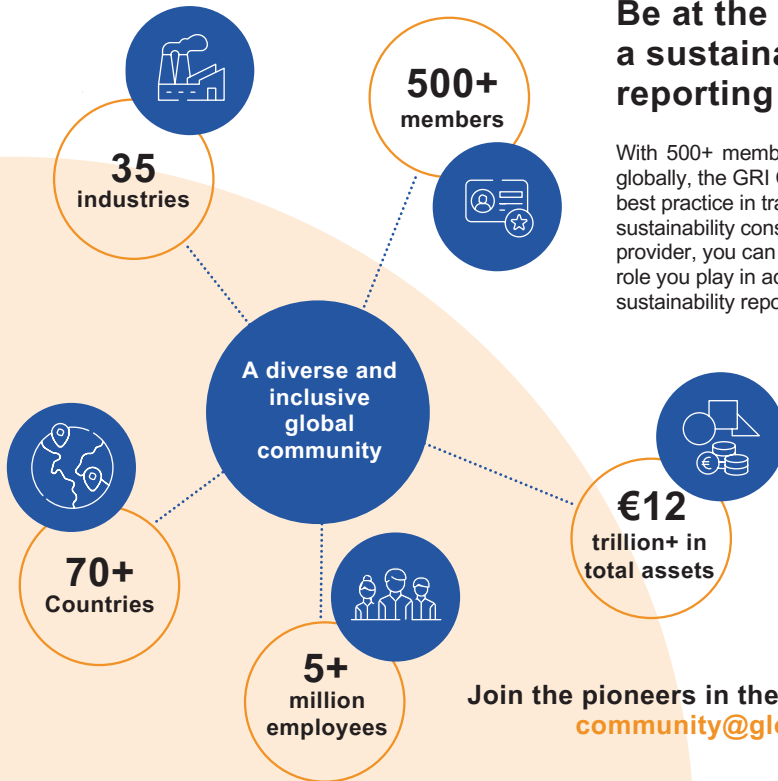
## Network and grow

Take your seat at the table in the global impact reporting ecosystem, connect with sustainability leaders and grow your business.

Are you applying your sustainability reporting expertise to advance your clients' reporting journeys? Whatever your consultancy organization's size, sector or reporting experience, you can take it to the next level when you join the GRI Community.

## Be at the forefront as a sustainability reporting consultant

With 500+ members across 35 industries globally, the GRI Community drives best practice in transparency. As a sustainability consultant or service provider, you can strengthen the crucial role you play in advancing your clients' sustainability reporting.



Join the pioneers in the GRI Community:  
[community@globalreporting.org](mailto:community@globalreporting.org)



## Showcase your expertise

When you join the Community, you highlight your sustainability reporting knowledge and commitment, building trust among clients.

- Use the GRI Community Mark on your website, marketing materials, online profiles and more
- Gain recognition among the world's sustainability pioneers
- Share your sustainability and reporting experience and grow your reputation in your field
- Profile your knowledge and skills as a certified sustainability professional



## Increase your knowledge and skills

As a Community member, you can enhance your skills with professional development courses, peer-to-peer learning opportunities and our archive of recorded meetings.

- Take advantage of free places on the GRI Professional Certification Program in your first year, and a permanent 25% discount on GRI Academy courses
- Gain actionable insights at four global virtual events a year, including GRI's Reporting in Practice webinars
- Learn from other Community members and benchmark clients' performance to set targets
- Get a direct line to GRI with opportunities to speak to the experts about the Standards and the reporting landscape



## Network and grow

Connect with leaders and pioneers in sustainability reporting, grow your business, and directly influence the future of impact reporting.

- Grow your business by forging new connections with other Community members
- Be first in line for events and other opportunities, with advance notice in the members-only newsletter
- Directly support GRI's mission and work to develop and update the Standards

*"The GRI community has provided a strategic platform to exchange information and create a real difference. If you want to better understand best practice and the brilliant insights into all the possibilities that the CSR reporting provides, we highly recommend to be part of this initiative."*

**Dr.-Ing. Thomas Fleissner,**  
founder and CEO of DFGE –  
Institute for Energy, Ecology  
and Economy

**Raise your profile, improve your reporting and drive transparency:**  
[community@globalreporting.org](mailto:community@globalreporting.org)

## GRI Community packages for consultants

	ANNUAL TURNOVER < €1 M	ANNUAL TURNOVER €1-100 M	ANNUAL TURNOVER €100 M-1 B
<b>Showcase your expertise</b>			
GRI Community Member Mark	●	●	●
Member details on GRI Website	●	●	●
<b>Increase your knowledge and skills</b>			
GRI Professional Certificate Program*	<b>1 free place</b>	<b>2 free places</b>	<b>3 free places</b>
25% Discount on GRI Academy	●	●	●
Learn on-the-go: GRI Newsletter with members-only content and unlimited access to our library of recorded webinars	●	●	●
Direct access to GRI to ask questions and gain in-depth knowledge of the GRI Standards	<b>1 ticket to discuss the GRI Standards</b>	<b>1 ticket to discuss the GRI Standards</b>	<b>1 ticket to discuss the GRI Standards</b>
Discount on GRI Report Services	<b>5%</b>	<b>5%</b>	<b>5%</b>
<b>Network and grow</b>			
A seat at the table: access 5 GRI-run virtual events a year	●	●	●
<b>Membership fee**</b>	<b>€1,250</b>	<b>€2,500</b>	<b>€5,000</b>
<b>Choose from these optional add-ons</b>			
3 tickets to schedule calls with GRI to discuss questions on GRI Standards		<b>€240</b>	
Policy briefing (tailored briefing for your team)		<b>€5,000</b>	
Technical briefing (tailored briefing for your team)		<b>€5,000</b>	

**Are you ready to join us and lead the way in sustainability reporting? Contact the GRI Community team at [community@globalreporting.org](mailto:community@globalreporting.org)**

\* Free places on the GRI Professional Certificate Program - Route A - GRI Academy are available only during the first year of membership after 1 September 2023. If all your staff is already certified and for re-certification in the second year of membership, please reach out to [community@globalreporting.org](mailto:community@globalreporting.org).

\*\* The GRI Community membership fee is based on the company's gross revenue (in euros) for the most recently completed fiscal year.