



Certified Training Partner program (CTP)

2024



About GRI

Who we are

- GRI is an **independent, international** organization providing the **global common language** for corporate transparency.
- We help businesses and organizations understand and communicate their **sustainability impacts**.
- We deliver the **GRI Standards**, the world's most widely adopted sustainability reporting framework – which is **freely provided** as a **public good**.
- GRI is a **not-for-profit** organization and activities are funded through services we deliver and by governmental and other funders that support our work.

Our focus areas



1

Create and maintain world-class sustainability disclosure standards

2

Drive global adoption of the GRI Standards

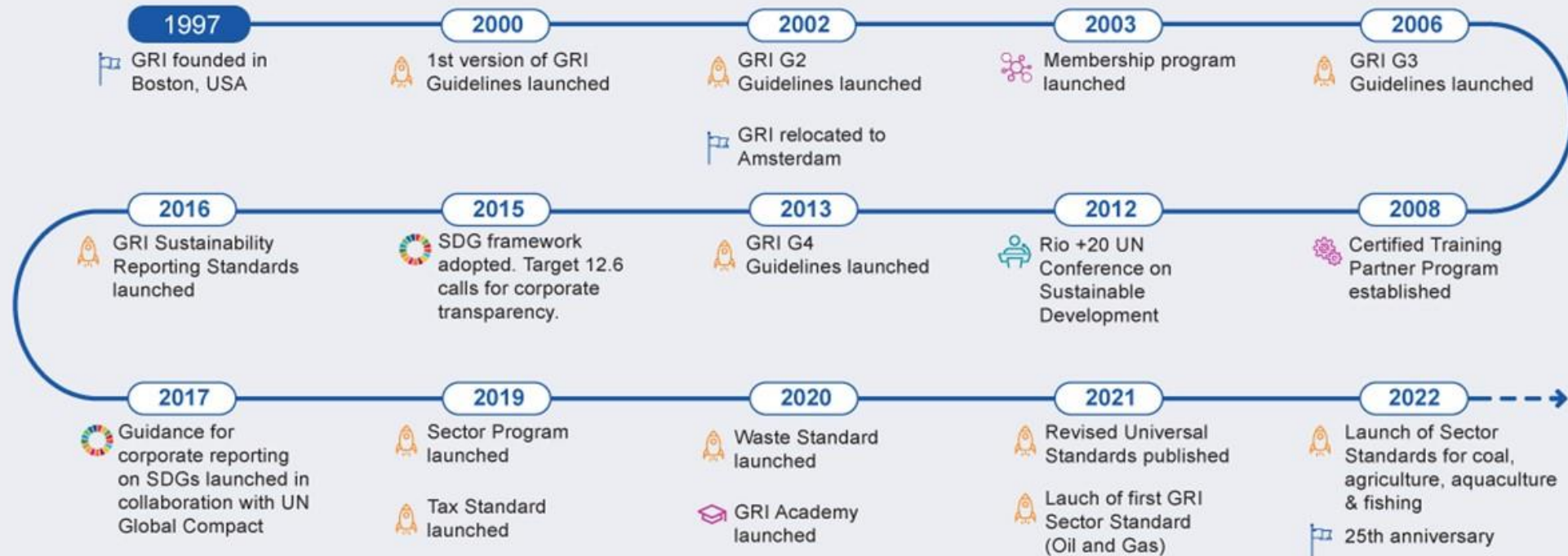
3

Improve the quality of reporting

4

Support full public access to sustainability disclosures

Timeline of GRI's history



Our impact

78%

of the **largest 250 companies** in the world reporting on sustainability use GRI

11,000+

Companies publish a **GRI report**

248

policies in **85 countries** and regions reference or require the GRI Standards

500

organizations from **68 countries** active in the GRI Community

975,000

unique downloads of the GRI Standards in 2022, a **45% rise** on previous year

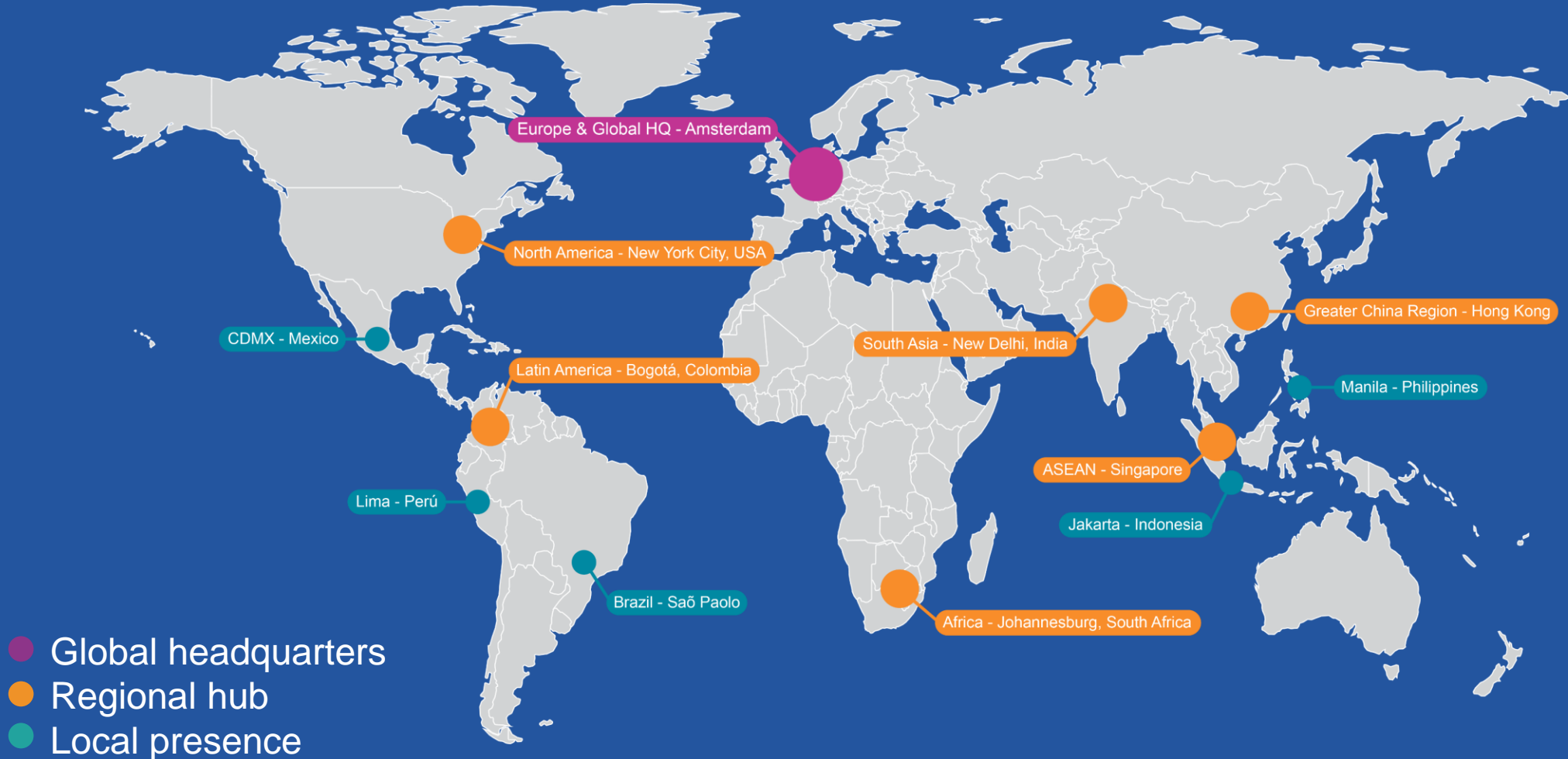
More than

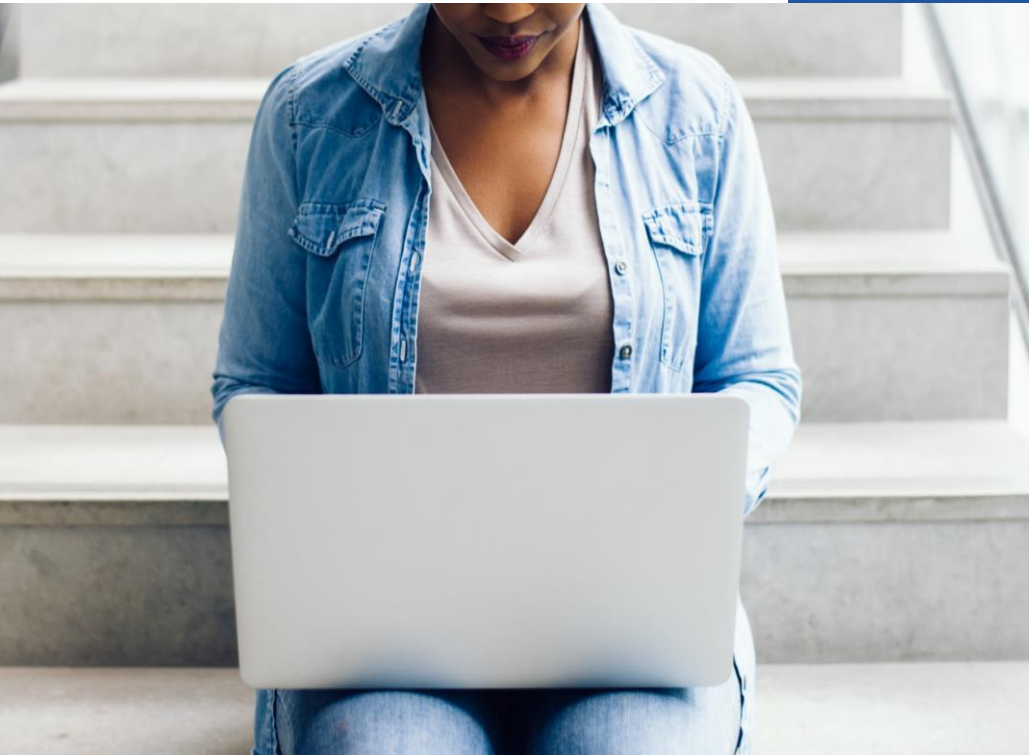
100

training partners across **57 countries** offer GRI Certified Training Courses

Where we are

A secretariat based in Amsterdam and Brussels, with six regional networks providing a presence around the world





The GRI Standards

GRI's approach



The GRI Standards represent **global best practice** for reporting sustainability performance – enhancing the **comparability and quality** of information.

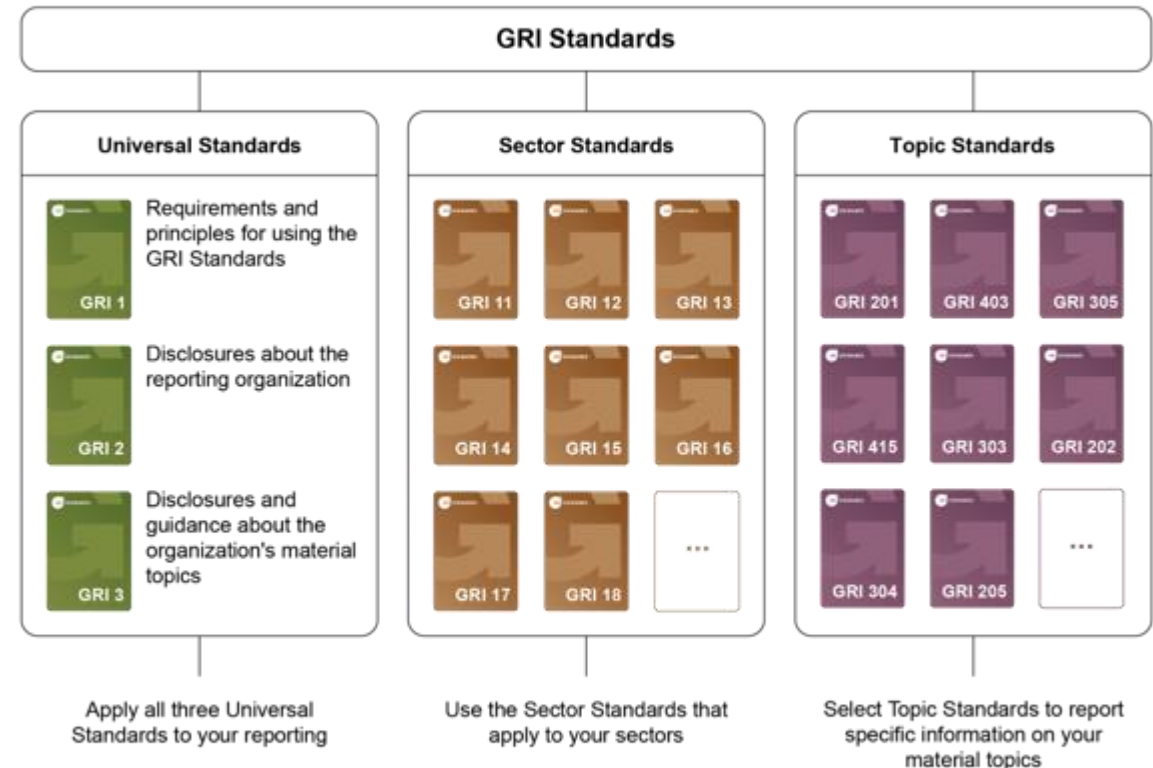
We operate through a robust **multi-stakeholder** approach, ensuring participation and **expertise** of diverse stakeholders in the development of the **GRI Standards**.



The GRI Standards



- The GRI Standards are a **modular system** comprising three series of standards: the revised **Universal Standards**, the new **Sector Standards**, and the adapted **Topic Standards**
- The new **Sector Standards** increase the quality, completeness, and consistency of reporting by organizations within sectors
- There are now **32 Topic Standards**. An organization selects the Topic Standards that correspond to the **material topics** it has determined for reporting.
- The updated GRI Standards are made **freely available** to any organization. Currently available in English, translations also available (for instance Spanish, Chinese, Japanese).



The Universal Standards



The Universal Standards, which apply to all reporting organizations, consist of the following:

- **GRI 1: Foundation 2021**
- **GRI 2: General Disclosures 2021**
- **GRI 3: Material Topics 2021**

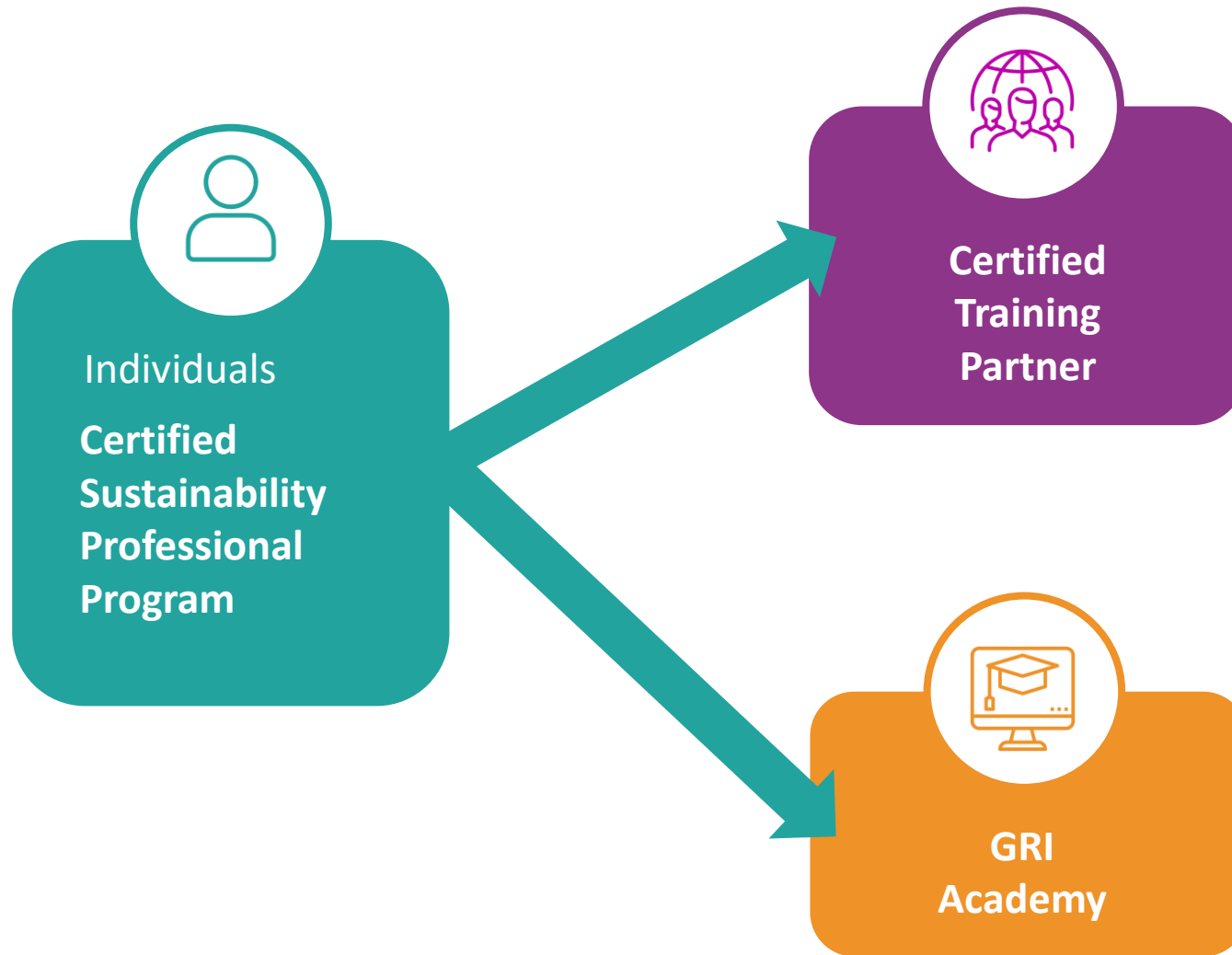
They are the first and only reporting standards to fully reflect the **due diligence expectations** for sustainability impacts - including on human rights, as set out in intergovernmental instruments by the UN and OECD.

The 2021 revision of the Universal Standards come into effect for reporting from **1 January 2023** – with early adoption encouraged.

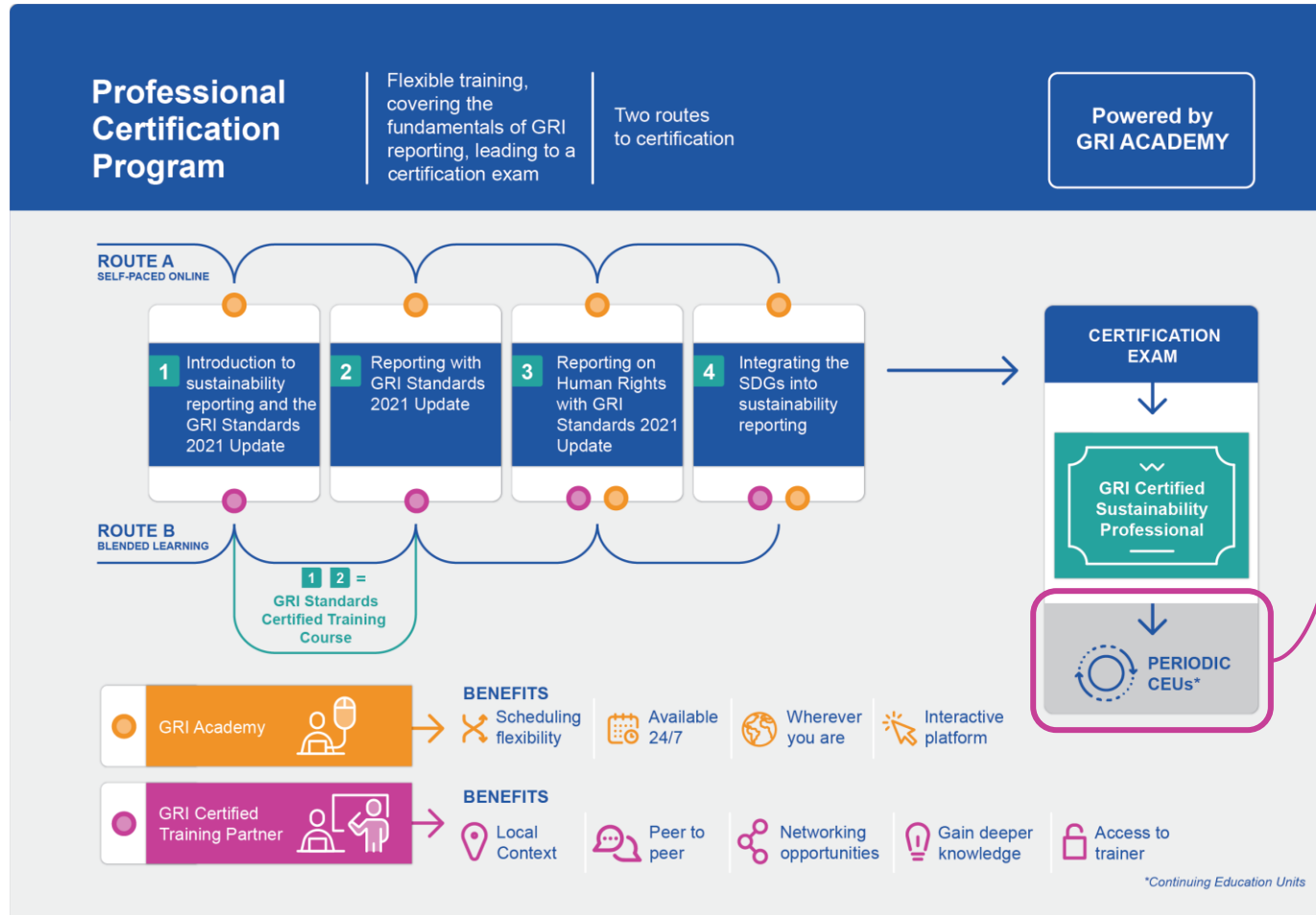


Certified Training Partner (CTP) Program

How to improve quality and drive global adoption?



GRI Professional Certification Program: route A vs route B



- 🔄 Mastery of Transparent Tax Reporting
- 🔄 Waste Management Impact Reporting
- 🔄 Reporting on the Impact of Occupational health and Safety
- 🔄 Unveiling GRI Sector Standards In-Depth Insights and Real-world Applications
- 🔄 Transparency for Tomorrow: Decoding the Sustainability Reporting Landscape
- 🔄 Unlocking the ESRS for GRI Reporters
- 🔄 Reporting with GRI 13: Agriculture, Aquaculture and Fishing Sectors 2022
- 🔄 External Assurance for Sustainability Reporting: A Comprehensive Guide

Why become a Certified Training Partner?




Deliver GRI certified training




Dedicated support




Promotional material



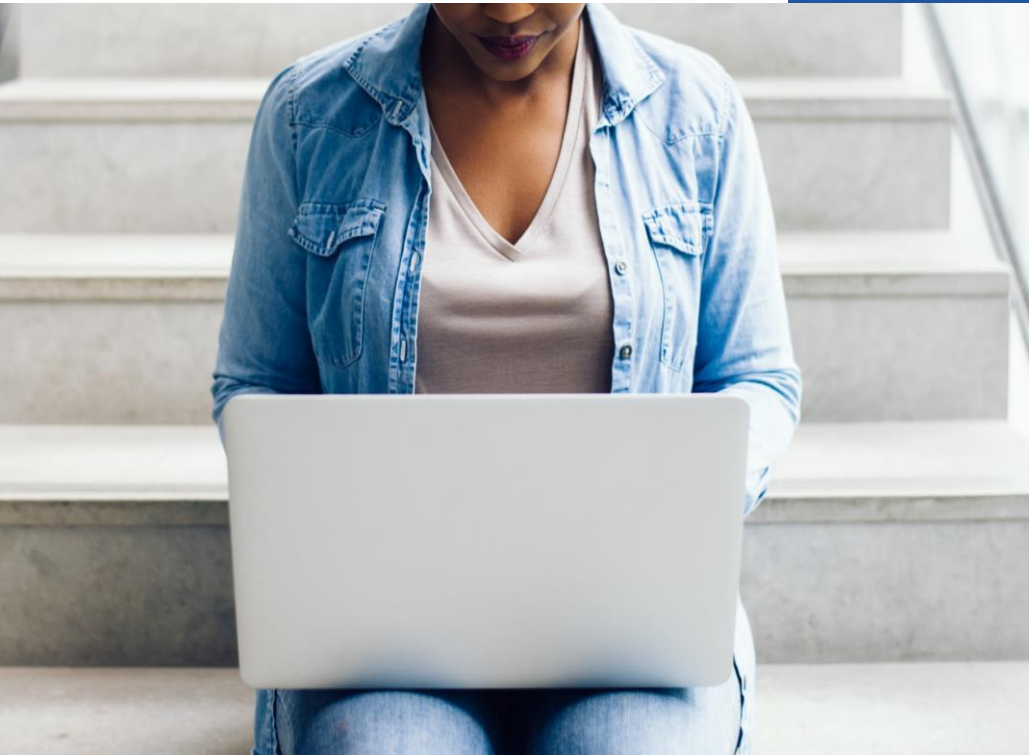
Training materials 2021 Standards



Promotion on GRI website

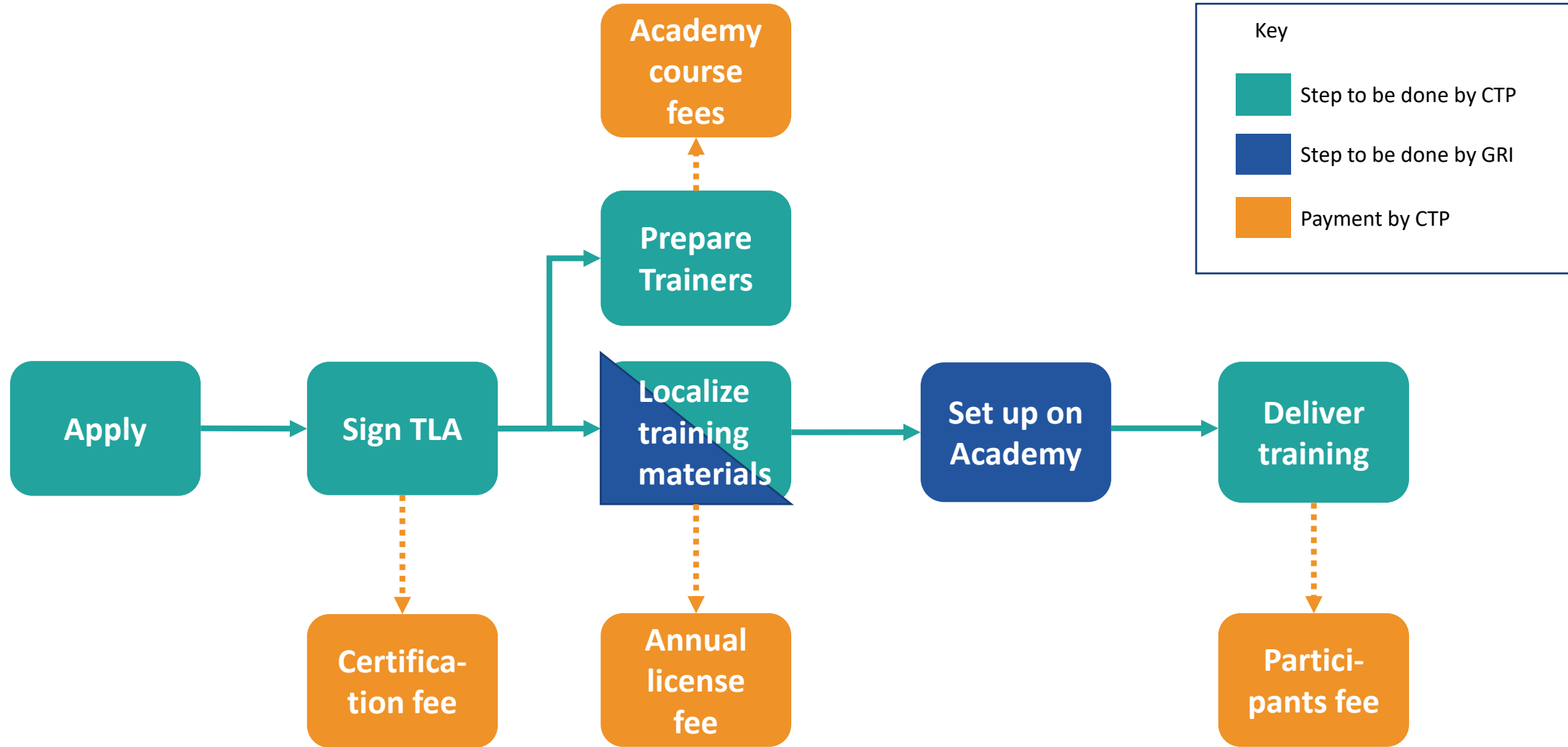


Competitive advantage



CTP certification process & fees

CTP certification process



CTP fees (non-profit organizations)

| Non-profit | | | |
|---|--|---|--|
| Regional license | | Global license | |
| Total first year € 5,825 (excl. 10% participants fee) | | Total first year € 7,475 (excl. 10% participants fee) | |
| Total second year € 2,050 (estimate, excl. 10% participants fee) | | Total second year € 3,700 (estimate, excl. 10% participants fee) | |
| 1st year fees | 2nd year fees | 1st year fees | 2nd year fees |
| Material certification fee € 3,850 | - | Material certification fee € 3,850 | - |
| The cost of trainer certification ¹ € 325 | - | The cost of trainer certification ¹ € 325 | - |
| - | Continuing Education Units (CEUs) fee ² € 400 per trainer | - | Continuing Education Units (CEUs) fee ² € 400 per trainer |
| Annual license fee € 1,650 | | Annual license fee € 3,300 | |
| 10% participants' fees (paid per quarter) Depending on the number of course participants and amount of fee paid | | 10% participants' fees (paid per quarter) Depending on the number of course participants and amount of fee paid | |



Frequently Asked Questions

What are the CTP selection criteria?

- The alignment of their vision and mission to GRI's vision and mission
- Current training activities / experience
- Current CSR activities / experience
- Target audience / market analysis - is the program sustainable for them based on market projections

What are the CTP membership conditions?

- 2 courses conducted in the 1st year and 50 participants trained per year in the next years
- The Training License covers one geographic region or the world
- All nominated trainers must be GRI's Sustainability Professionals and maintain the certification to deliver training (they have 50% discount on Academy courses)

How long does it take to become a CTP?

- The entire certification process can take from three to six months, on average, depending on many factors, such as resources that the CTP can dedicate to TLA signing timelines, material development, quality of case studies, timely fee payments, and other factors.

What are the fees?

- Please check "[Pricing Policy](#)" document for details.

- **Which courses can the CTPs conduct?**
- Once fully certified, all training partners gain the license to teach the flagship GRI Certified Standards training course - "Reporting with GRI Standards 2021 Update." This course is predominantly developed by GRI, with CTPs contributing by creating four case studies. This process is covered by the fees per pricing policy (refer to the website for details). GRI doesn't endorse an organization's own courses.
- Additionally, CTPs can license GRI's off-the-shelf courses, such as "Reporting on Human Rights with GRI Standards 2021 Update" and "Integrating SDGs into Sustainability Reporting," as well as the CEU courses. This is subject to additional fees. Please contact the [Training Partner team](#) for more information.

- **Can we convert the course(s) into e-learning?**
- Following certification, CTPs have the license to deliver GRI-certified training course(s) either in-person or remotely through platforms like Zoom or Teams, provided the instructor is present during the session.
- It is not permitted to convert or offer the GRI-certified training course(s) in the asynchronous e-learning format.

THANK YOU



www.globalreporting.org

 [global-reporting-initiative-gri](https://www.linkedin.com/company/global-reporting-initiative-gri)

 [@GlobalReportingInitiative](https://medium.com/@GlobalReportingInitiative)

 [@GRI_Secretariat](https://twitter.com/GRI_Secretariat)