

A background image of a wind farm with several white wind turbines against a clear sky. In the top left corner, there is a blue circle containing the white text 'GRI'.

GRI

Certified Training Partner program (CTP)

2025



About GRI

Who we are

- GRI is an **independent, international** organization providing the **global common language** for corporate transparency.
- We help businesses and organizations understand and communicate their **sustainability impacts**.
- We provide the **GRI Standards**, the world's most widely adopted sustainability reporting framework – which is **freely available** as a **public good**.
- GRI is a **not-for-profit** organization, and our activities are funded by services we deliver and by governmental and other funders that support our work.

Our strategic focus areas



1

Create and maintain
world-class sustainability
disclosure standards

2

Drive global adoption of
the GRI Standards

3

Improve the quality of
reporting

4

Support full
public access to
sustainability disclosures

More than two decades of setting the standards



Over 25 years of setting the standard



Established in 1997, we marked our 25th anniversary in 2022

Timeline of GRI's history



Our impact in numbers

90%

of **major companies** that
report on sustainability
use the **GRI Standards**

77%

of the world's **largest
250 companies** report
with GRI

10,000+

learners from **150
countries** have completed
GRI Academy courses

128

countries with **national or
jurisdictional policies** that
reference the **GRI Standards**

700,000+

unique **downloads of the
GRI Standards** in 2024

450+

organizations from **85
countries** are members
of the **GRI Community**

10

language **translations**
of the **GRI Standards**

100+

GRI **Licensed
Software & Tools**
partner companies

100+

training partners in over
50 countries offer GRI
Certified Training

1,500+

GRI **Certified
Sustainability
Professionals**

Our presence around the world



A global HQ in The Netherlands – with strategic support from our Regional Network





The GRI Standards

GRI's approach



The GRI Standards represent **global best practice** for reporting sustainability performance – enhancing the **comparability and quality** of information.

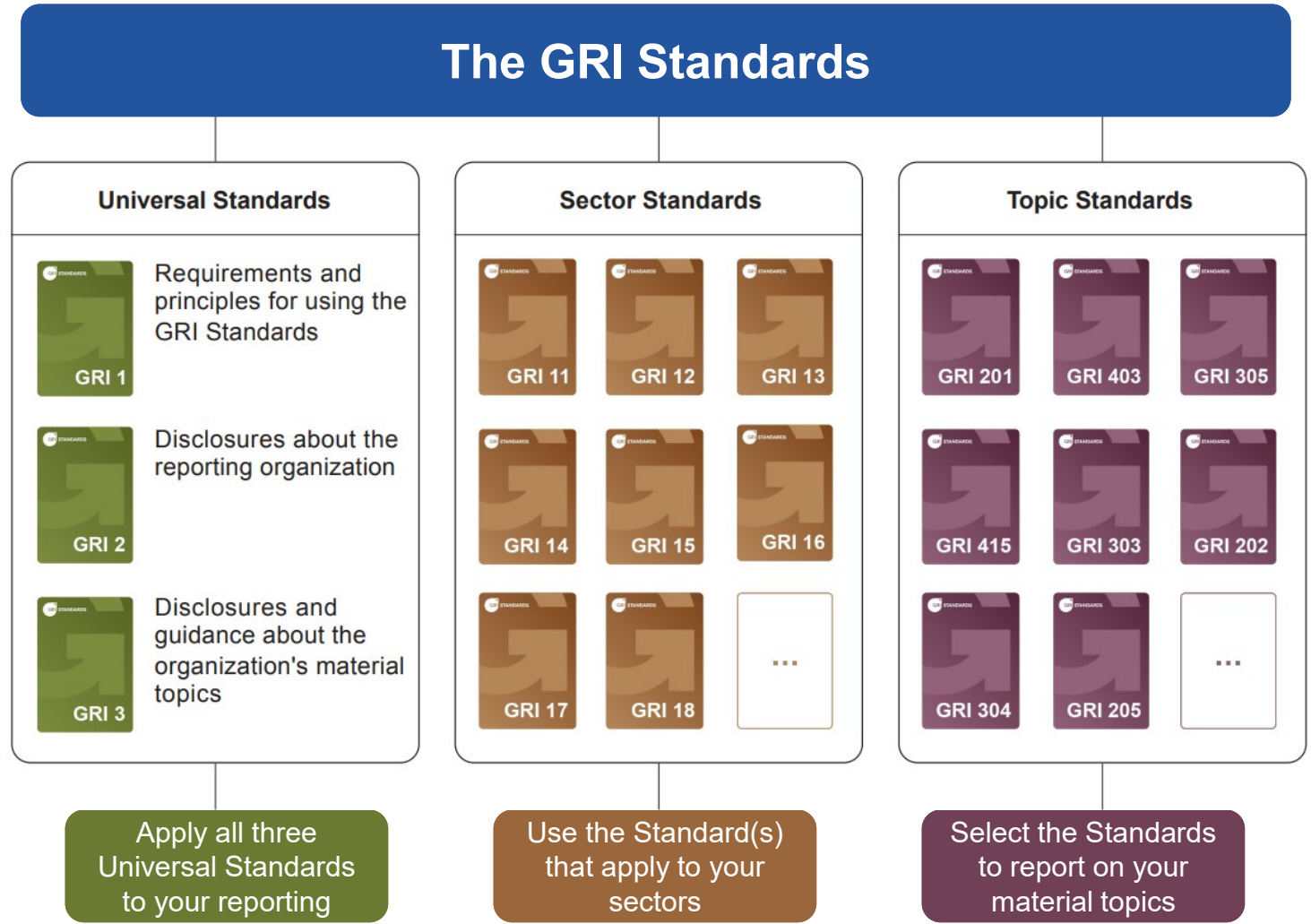
We operate through a robust **multi-stakeholder** approach, ensuring participation and **expertise** of diverse stakeholders in the development of the **GRI Standards**.



The GRI Standards



- A **modular system** of three series: **Universal** Standards, **Sector** Standards and **Topic** Standards
- There are **32 Topic Standards** and a growing range of **Sector Standards**
- An organization selects the Standards for reporting based on their **material topics**
- The GRI Standards are **freely available**, in English plus 10 translations.



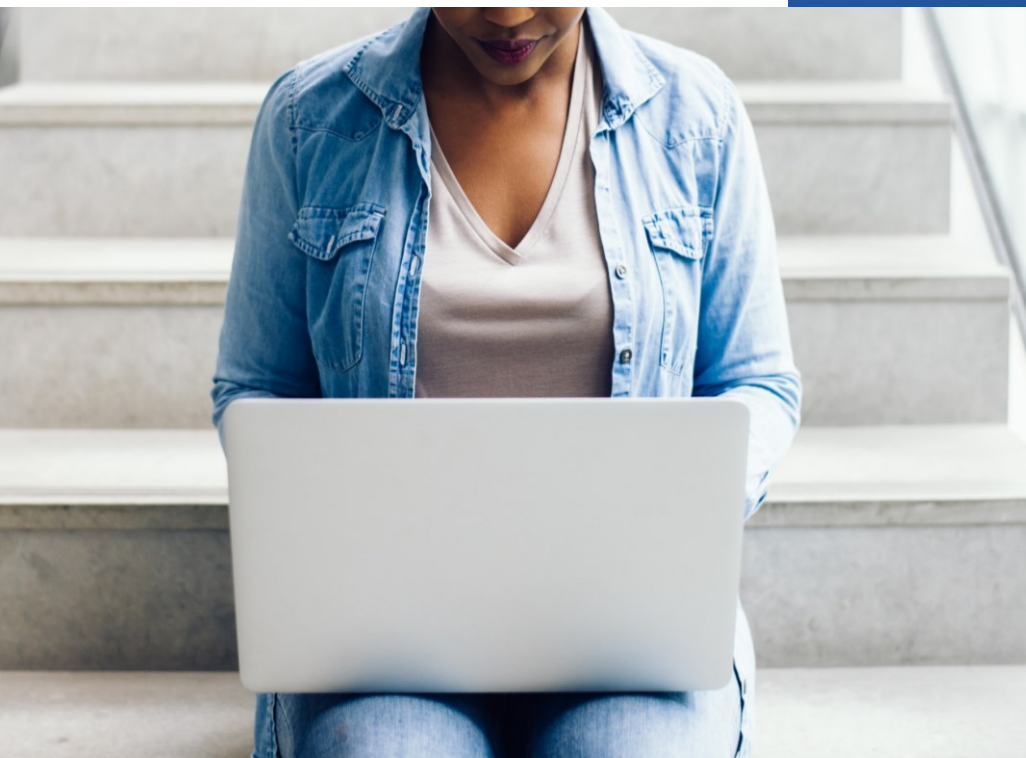
The Universal Standards

The Universal Standards, which apply to all reporting organizations, consist of the following:

- **GRI 1: Foundation 2021**
- **GRI 2: General Disclosures 2021**
- **GRI 3: Material Topics 2021**

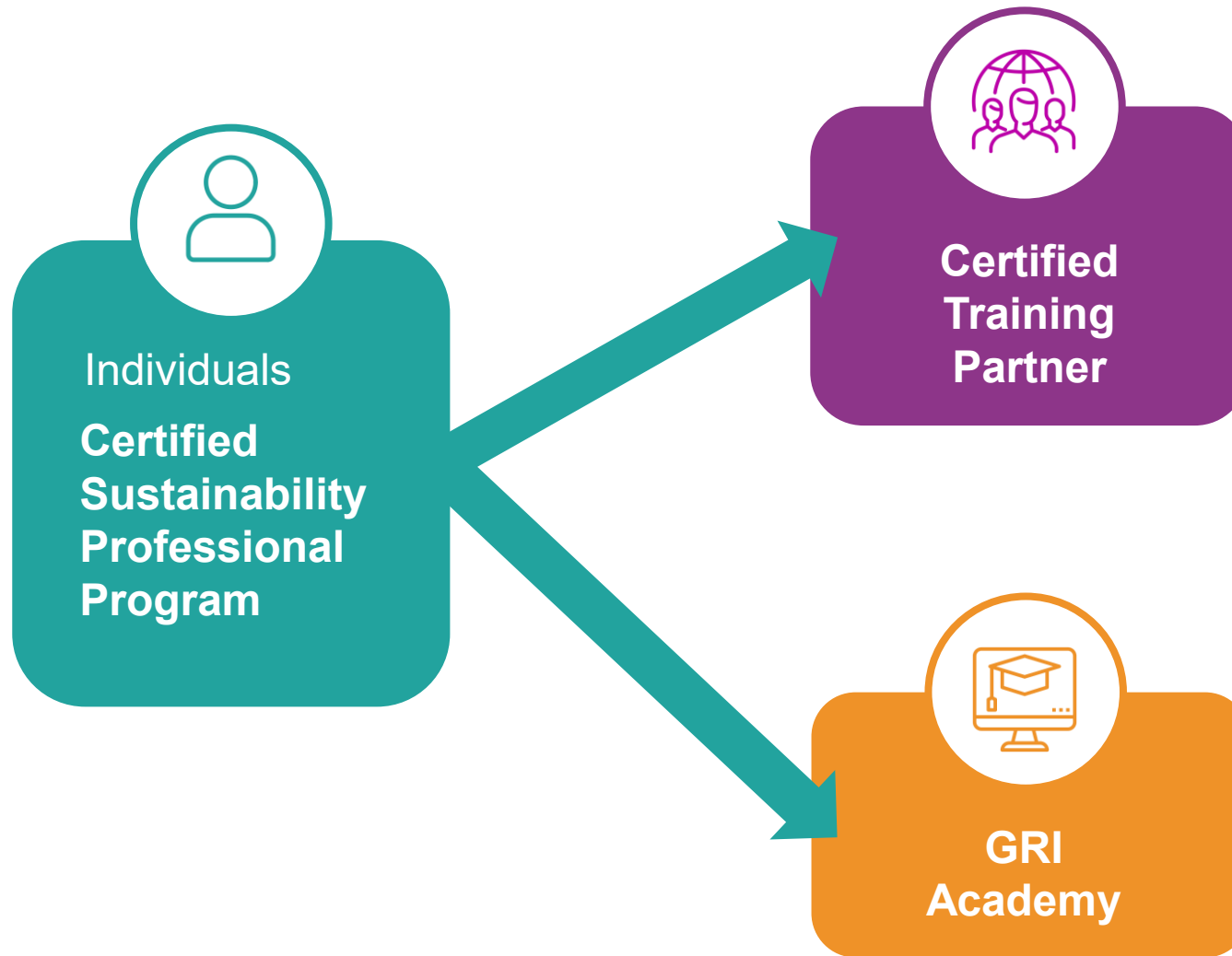
They are the first and only reporting standards to fully reflect the **due diligence expectations** for sustainability impacts - including on **human rights**, as set out in intergovernmental instruments by the UN and OECD.





Certified Training Partner (CTP) Program

How to improve reporting quality and drive global adoption?



GRI Professional Certification Program: route A vs route B



- ↻ Mastery of Transparent Tax Reporting
- ↻ Waste Management Impact Reporting
- ↻ Reporting on the Impact of Occupational Health and Safety
- ↻ External Assurance for Sustainability Reporting: A Comprehensive Guide
- ↻ Charting a Greener Path: Reporting on Biodiversity with the GRI Standards
- ↻ Unlocking the ESRS for GRI Reporters
- ↻ Reporting with GRI 13: Agriculture, Aquaculture and Fishing Sectors 2022
- ↻ Sustainability Reporting for the Oil and Gas Sector: Navigating the GRI 11 Sector Standard
- ↻ Sustainability Reporting for the Mining Sector: Navigating the GRI 14 Sector Standard
- ↻ Sustainability Reporting for the Coal Sector: Navigating the GRI 12 Sector Standard

- GRI CTPs gain the license to teach the GRI Standards Certified Training course: Reporting with the GRI Standards (1).
- To teach the full path, CTPs can license courses 2,3,4 of the Professional Certification Program for an additional annual license fee.

Why become a Certified Training Partner?



Deliver GRI
certified training



Dedicated
support



TRAINING PARTNER

2025

Promotional
material



STANDARDS

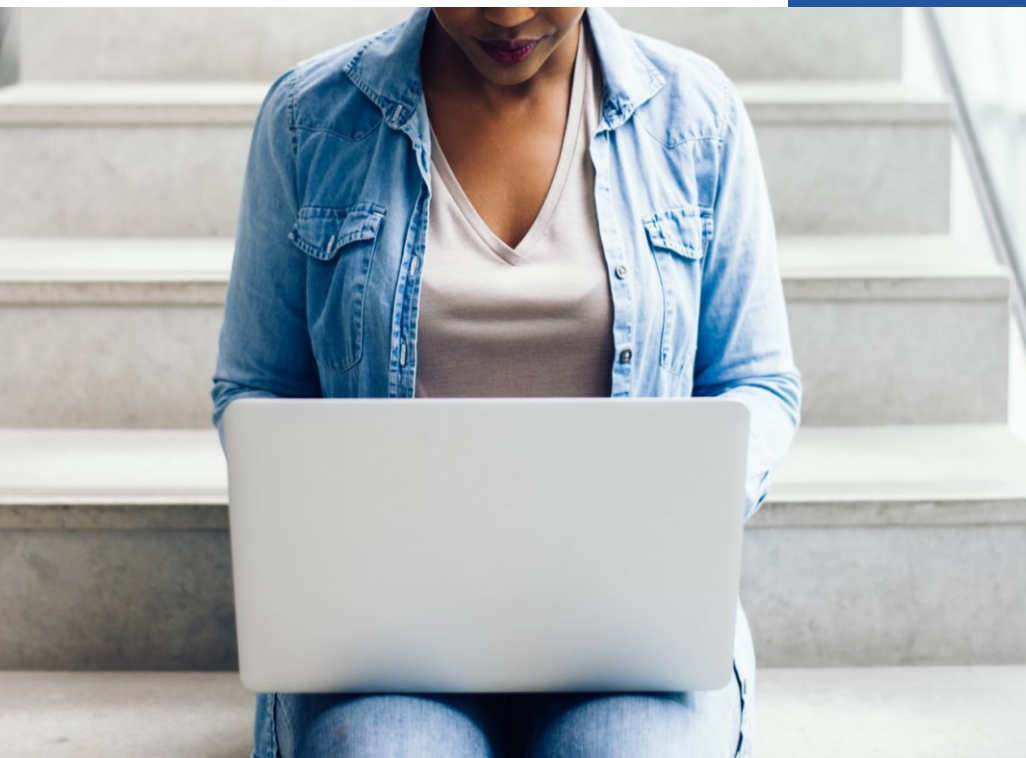
Training materials
GRI Standards



Promotion on
GRI website

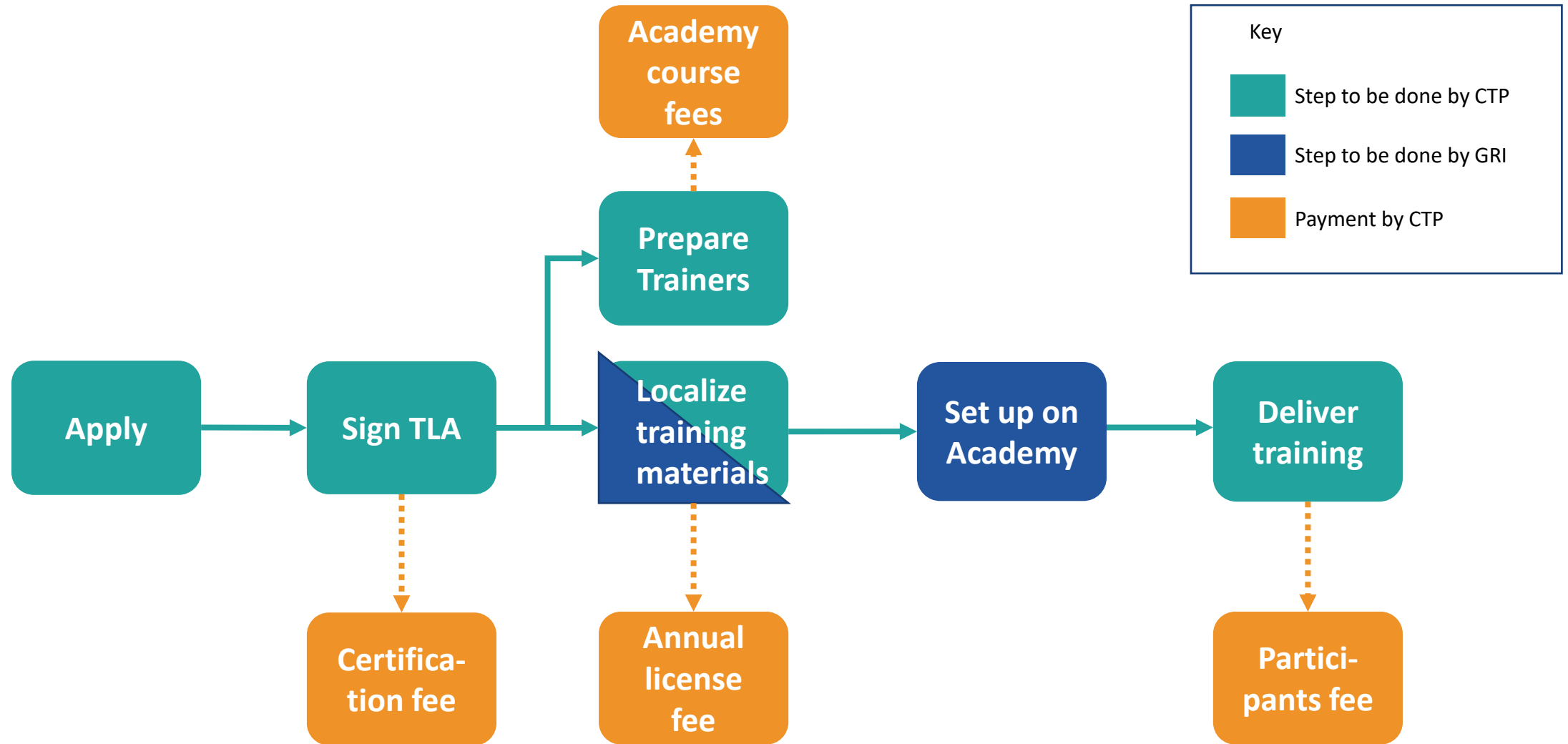


Competitive
advantage



CTP certification process & fees

CTP certification process



CTP fees (non-profit organizations)

Non-profit			
Regional license		Global license	
Total first year € 5,875 (excl. 10% participants fee)		Total first year € 7,525 (excl. 10% participants fee)	
Total second year € 2,050 (estimate, excl. 10% participants fee)		Total second year € 3,700 (estimate, excl. 10% participants fee)	
1st year fees	2nd year fees	1st year fees	2nd year fees
Material certification fee € 3,850	-	Material certification fee € 3,850	-
The cost of trainer certification ¹ € 375	-	The cost of trainer certification ¹ € 375	-
-	Continuing Education Units (CEUs) fee ² € 400 per trainer	-	Continuing Education Units (CEUs) fee ² € 400 per trainer
Annual license fee € 1,650		Annual license fee € 3,300	
10% participants' fees (paid per quarter) Depending on the number of course participants and amount of fee paid		10% participants' fees (paid per quarter) Depending on the number of course participants and amount of fee paid	



Frequently Asked Questions

What are the CTP selection criteria?

- Alignment of candidate CTP's vision and mission with GRI's vision and mission.
- Current training activities and experience.
- Current ESG activities and experience.
- Target audience / market analysis - is the program sustainable for the candidate CTP based on market projections?

What is the application process?

- Ensure the necessary approvals (e.g., Board), authorizations to conduct educational activities in the country, and the necessary funding.
- Complete the CTP program application and send it to the Training Partners team.

What are the CTP membership conditions?

- 2 courses conducted in the 1st year, and 50 participants trained per year in the following years.
- The Training License covers one geographic region or the world.
- All nominated trainers must be GRI Sustainability Professionals and maintain their certification (they have a 50% discount on all CEU Academy courses and the main certification path courses).
- The Training License covers one legal entity and can not be shared with any other legal entities that Partner may be connected to in any way.

How long does it take to become a CTP?

- The entire certification process can take from three to six months, on average, depending on many factors, such as resources that the CTP can dedicate to TLA signing timelines, material development, quality of case studies, timely fee payments, and other factors. We have recently developed GRI generic case studies. Interested partners can use these, thereby speeding up their overall certification process.

What are the fees?

- Please check "Pricing Policy" document for details.

Which courses can CTPs conduct?

- Once fully certified, all training partners are licensed to teach the flagship GRI Certified Standards training course – “Reporting with the GRI Standards”. This course is developed by GRI, with CTPs contributing four case studies or choosing to use GRI-developed generic case studies. This is covered by the fees mentioned in the pricing policy (see GRI website for details). GRI does not endorse a partner’s own courses.
- Additionally, CTPs can license GRI’s off-the-shelf courses, such as “Reporting on Human Rights with the GRI Standards,” “Navigating the GRI Sector Standards,” and “Transparency for Tomorrow: Decoding the Sustainability Reporting Landscape” as well as the CEU courses or ESRS courses. This is subject to additional fees. Please contact the [Training Partners team](#) for more information.

Can we convert the course(s) into e-learning?

- Following certification, CTPs have the license to deliver GRI-certified training course(s) either in-person or remotely through platforms like Zoom or Teams, provided the instructor is present during the session.
- It is not permitted to convert or offer the GRI-certified training course(s) in the asynchronous e-learning format.

I am a GRI Certified Sustainability Professional. Can I become a CTP?

- The GRI CTP program is open for organizations (not individuals) that want to deliver GRI-certified training sessions in their region or globally.
- GRI does not endorse the CTPs in terms of consultancy or audit services but only in terms of delivery of the GRI-certified training courses.

THANK YOU



www.globalreporting.org

 [global-reporting-initiative-gri](https://www.linkedin.com/company/global-reporting-initiative-gri)

 [@GlobalReportingInitiative](https://twitter.com/GlobalReportingInitiative)